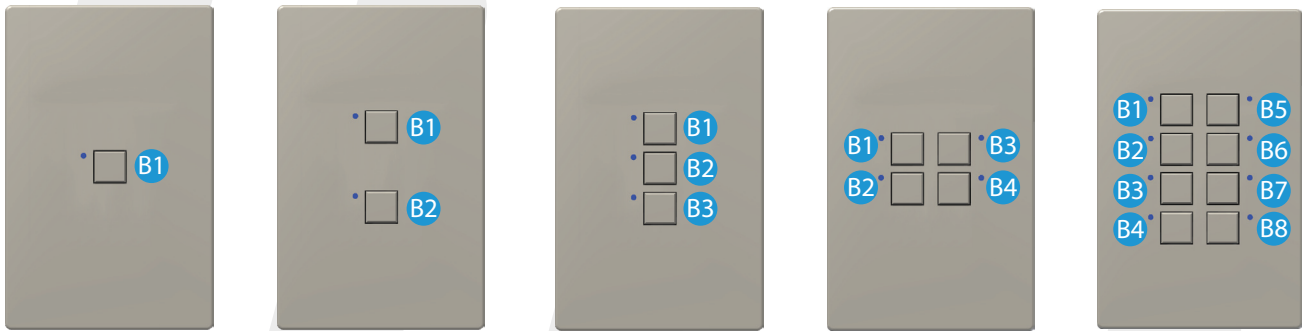


Mystique DMX Wiring Diagram

Use the following to wire a Mystique DMX Station. Digital systems are Touchplate systems. Each system will have different components and this document does not show all possible connections.

Button Layout

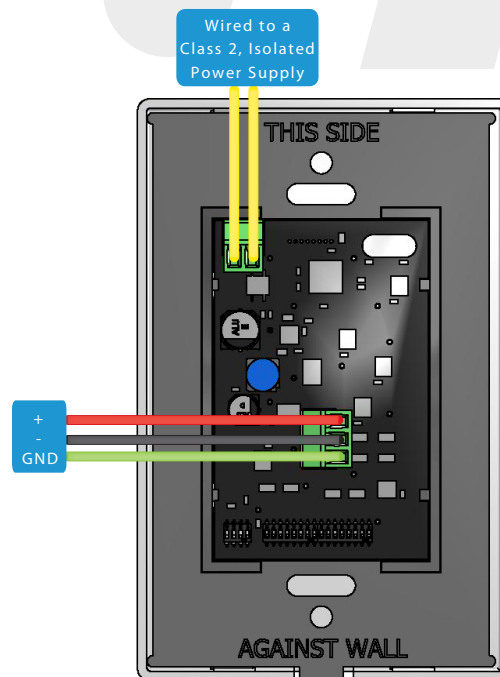


Wiring Information

- Can be home runned, daisy chained, or a combination of both.
- Touchplate recommends the use of 22/01PSH+ 18/2C or equivalent wire.
- **Shield or Ground must be isolated from the ground on the power supply. Using the same ground will create a direct short and damage the unit.**

Communicating to and Powering the Station

- Voltage Range: 12 - 24 VAC/VDC.
- Power will typically come from a relay/dimmer panel, or from a 120vac to 24vdc transformer in the wall box.
- Communication and data terminals are typically labeled as GND, -, and +.



Switch/Dimmer Mode Dip Switch Settings

Use the following to change the DMX output mode on the Mystique Station.

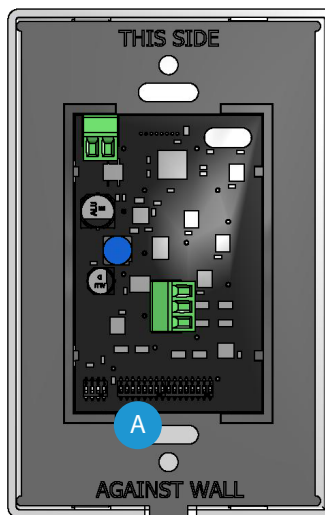
When in Switch Mode:

- Button Press cycles between ON (100%, 255 DMX) & OFF (0%, 000 DMX) .

When in Dimmer Mode:

- Button Press cycles between last preset level & OFF (100%, 255 DMX) .
- Button Hold begins to Dim Up, Release at desired level
- Or release and hold again to Dim Down, release at desired level

Button/Dipswitch	1	2	3	4	5	6	7	8
Switch Mode	OFF							
Dimmer Mode	ON							
Switch Mode		OFF						
Dimmer Mode		ON						
Switch Mode			OFF					
Dimmer Mode			ON					
Switch Mode				OFF				
Dimmer Mode				ON				
Switch Mode					OFF			
Dimmer Mode					ON			
Switch Mode						OFF		
Dimmer Mode						ON		
Switch Mode							OFF	
Dimmer Mode							ON	
Switch Mode								OFF
Dimmer Mode								ON



Option Dip Switch Settings

Use the following to change the LED color and/or intensity.

Options	1	2	3	4	5	6	7	8
Lowest LED Intensity	OFF	OFF						
Low LED Intensity	ON	OFF						
Medium LED Intensity	OFF	ON						
High LED Intensity	ON	ON						
1B Station			ON	OFF	OFF			
2B Station			OFF	ON	OFF			
3B Station			ON	ON	OFF			
4B Station			OFF	OFF	ON			
8B Station			ON	ON	ON			
LEDs Off						OFF	OFF	OFF
Red LEDs						ON	OFF	OFF
Green LEDs						OFF	ON	OFF
Blue LEDs						ON	ON	OFF
Yellow LEDs						OFF	OFF	ON
Purple LEDs						ON	OFF	ON
Cyan LEDs						OFF	ON	ON
White LEDs						ON	ON	ON

