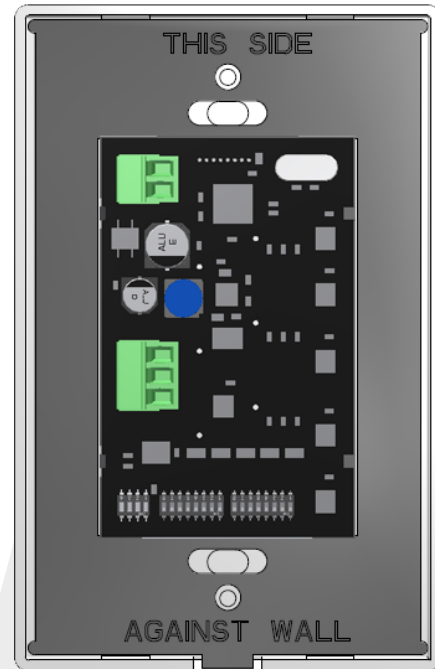
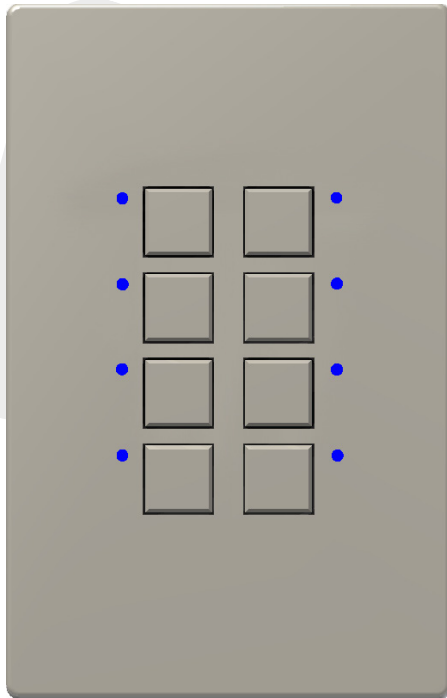


Mystique DMX Master Station



Benefits

- Ideal for upgrades of existing low voltage systems
- Pairs well with our Solare Universal 8 channel switch/dimmer mode load controller SLR-UD-RT

Features

- Selectable mode for each button
- Switch Mode - Relay 000 or 255. 0 or 100%
- Dimmer Mode - Dimmer 000-255. 0-100%
- Configurable LED intensity and color
- 1 Gang configuration has a screwless cover
- Engravable button caps
- Comes as a complete unit, which includes the cover

Common Applications

- Used for small office/warehouse/home installations

Specifications

Colors

- Light Almond, Black, Ivory, and White

Button Configuration

- 1, 2, 3, 4 & 8 Buttons in a 1-Gang wall mount

Run Length

- Up to 4000ft per run
- Dependent on the power connection

Control

- Simple 1-8 Zone DMX controller

Voltage Range

- 12 - 24VAC/VDC
- Requires Class 2 Isolated Power Supply

Wire Type

- Axlink 22/01PSH+ 18/2C or equivalent

Environment

- 0 - 60°C (0 - 140°F) non-condensing atmosphere



LED Model Numbers

Part Number	Description	Dimensions
MYSS1-0101D-XXX	Mystique Station, 1 Gang, 1 Button/1 LED, DMX	4.880"L x 3.125"W x .780"D
MYSS1-0202D-XXX	Mystique Station, 1 Gang, 2 Button/2 LED, DMX	4.880"L x 3.125"W x .780"D
MYSS1-0303D-XXX	Mystique Station, 1 Gang, 3 Button/3 LED, DMX	4.880"L x 3.125"W x .780"D
MYSS1-0404D-XXX	Mystique Station, 1 Gang, 4 Button/4 LED, DMX	4.880"L x 3.125"W x .780"D
MYSS1-0808D-XXX	Mystique Station, 1 Gang, 8 Button/8 LED, DMX	4.880"L x 3.125"W x .780"D
XXX Color Suffix	Colors Available: Light Almond (ALM), Black (BLK), Ivory (IVR), and White (WHT)	

Wiring Diagram

This wiring diagram does not show all the connections. Please see the Mystique Wiring Diagram for further wiring instructions.

