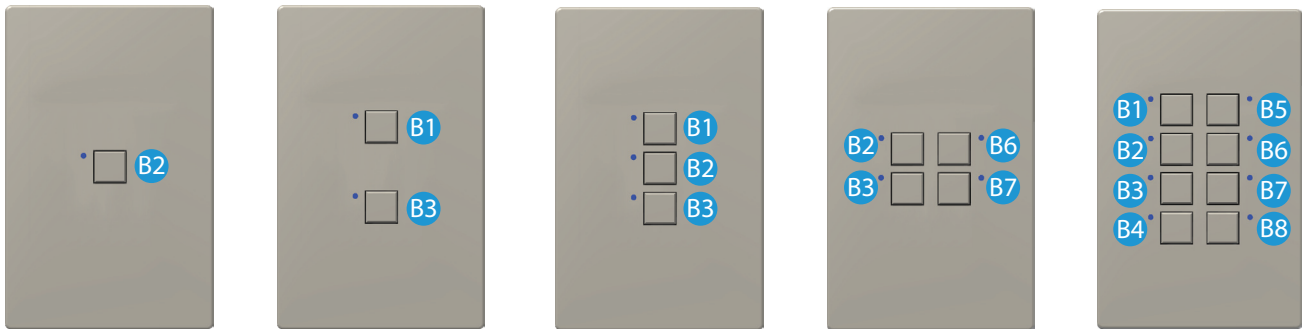


## Mystique 435` W Wiring Diagram for Digital Systems

Use the following to wire a Mystique BACnet Station.

Each system will have different components and this document does not show all possible connections.

### Button Layout

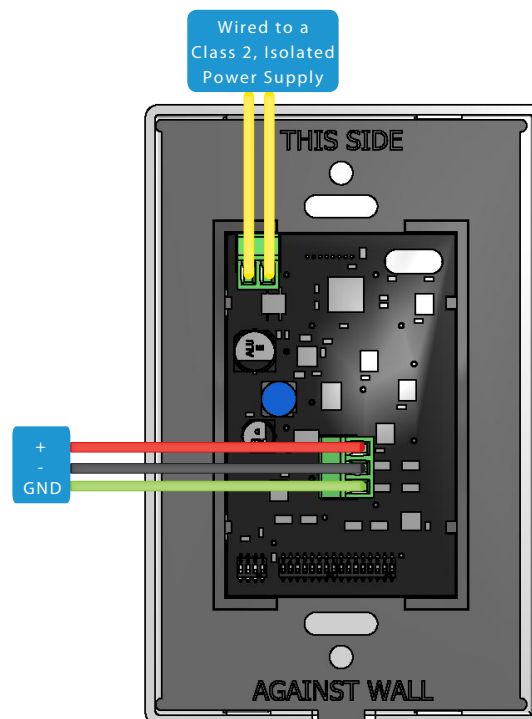


### Wiring Information

- Touchplate recommends the use of 22/01PSH+ 18/2C or equivalent wire
- **Shield or Ground must be isolated from the ground on the power supply. Using the same ground will create a direct short and damage the unit.**

### Communicating to and Powering the Station

- Power with a 24vdc Class 2 isolated Power Supply.
- Communication and data terminals are typically labeled as GND, -, and +



## Address Dip Switch Settings

Use the following to change a Mystique Station Address. Normally, addresses are typically pre-set at the factory. Make sure not to duplicate addresses, as each station needs to have its own unique address.

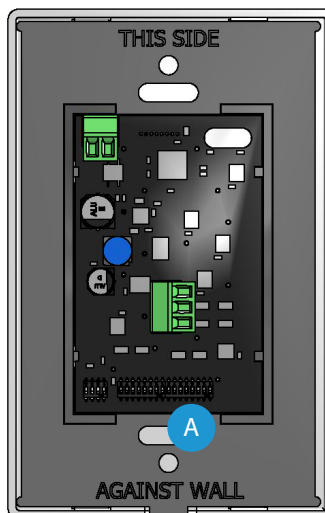
Address	1	2	3	4	5	6	7	8
1	ON	OFF	OFF	OFF	OFF	OFF	OFF	OFF
2	OFF	ON	OFF	OFF	OFF	OFF	OFF	OFF
3	ON	ON	OFF	OFF	OFF	OFF	OFF	OFF
4	OFF	OFF	ON	OFF	OFF	OFF	OFF	OFF
5	ON	OFF	ON	OFF	OFF	OFF	OFF	OFF
6	OFF	ON	ON	OFF	OFF	OFF	OFF	OFF
7	ON	ON	ON	OFF	OFF	OFF	OFF	OFF
8	OFF	OFF	OFF	ON	OFF	OFF	OFF	OFF
9	ON	OFF	OFF	ON	OFF	OFF	OFF	OFF
10	OFF	ON	OFF	ON	OFF	OFF	OFF	OFF
11	ON	ON	OFF	ON	OFF	OFF	OFF	OFF
12	OFF	OFF	ON	ON	OFF	OFF	OFF	OFF
13	ON	OFF	ON	ON	OFF	OFF	OFF	OFF
14	OFF	ON	ON	ON	OFF	OFF	OFF	OFF
15	ON	ON	ON	ON	OFF	OFF	OFF	OFF
Through Address 127 - Use the table below to calculate MSTP Switch Address								

Valid addresses are 1 to 127. Addresses are set using the eight Address Dip Switches.

Address Dip Switch	1	2	3	4	5	6	7	8
Value	1	2	4	8	16	32	64	128

The values of all switches in the ON position are added together and the total is equal to the address. See the examples below:

- MSTP Control Station Address 1: Turn on switch 1 only and leave all other Address switches off.
- MSTP Control Station Address 13: Turn on switches 1, 3, and 4. The values of those switches are  $1+4+8 = 13$ .



## Option Dip Switch Settings

Use the following to change the baud rate, color/intensity setting, or factory reset.

Dip Switches 1-2 set the Baud Rate.

Dip Switches 4-5 set the Options.

Option	1	2	3	4	5	6	7	8
Baud Rate - 9600	OFF	OFF	--	--	--	--	--	--
Baud Rate - 19200	ON	OFF	--	--	--	--	--	--
Baud Rate - 38400	OFF	ON	--	--	--	--	--	--
Baud Rate - 76800	ON	ON	--	--	--	--	--	--
LED Color and Intensity - ON *	--	--	--	ON	OFF	--	--	--
LED Color and Intensity - OFF **	--	--	--	OFF	OFF	--	--	--
Factory Reset - ON ***	--	--	--	OFF	ON			
Factory Reset - OFF	--	--	--	OFF	OFF			

\* The LED becomes active. Color and intensity are set to the color and intensity in the corresponding AV.

\*\*The LED color and intensity are stored in the corresponding AV. The corresponding BO determines whether the LED is active or not.

\*\*\*When turned on for 10 seconds the station is returned to factory defaults. The Device ID returns to 68501 and all COV's are cleared.

