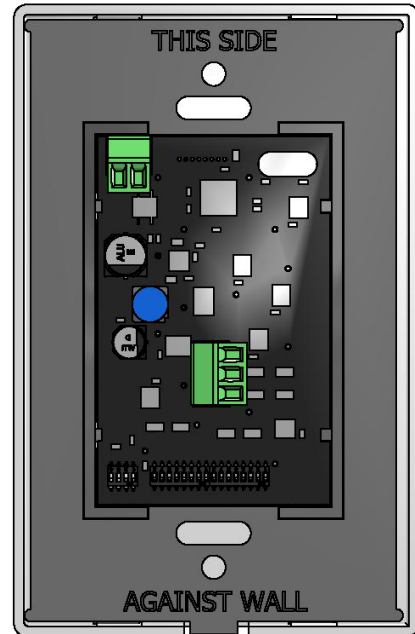
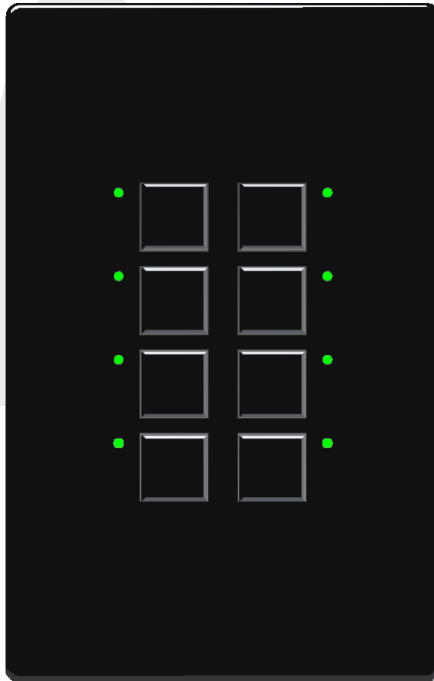


## Mystique Smart Station with BACnet Protocol



### Product Features

- Direct BACnet connection via a controller that communicates MSTP
- Configurable LED intensity and color
- Supports subscriptions to button change of values (COVs)
- Multiple station colors available
- Multiple button and LED configurations
  - 1, 2, 3, 4 or 8 buttons per gang
  - 1, 2, 3, 4 or 8 LEDs per gang
- 1 Gang configuration has a screwless cover
- Engravable cover or buttons
- Comes as a complete unit, which includes the cover

### Common Applications

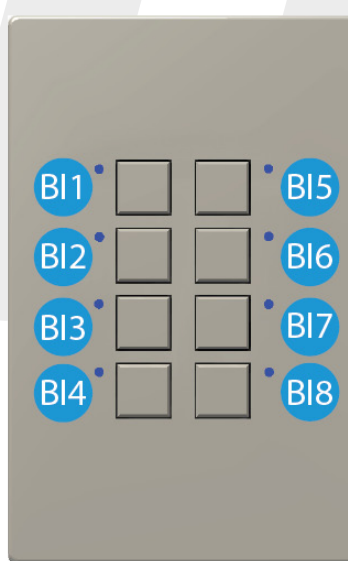
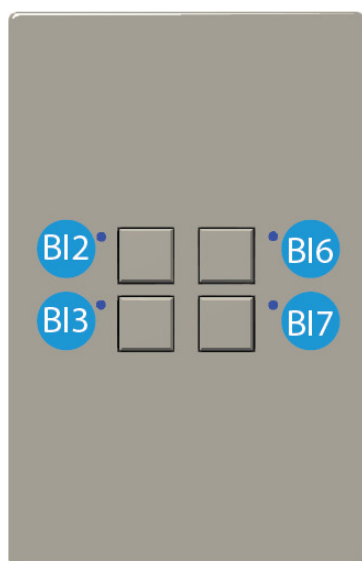
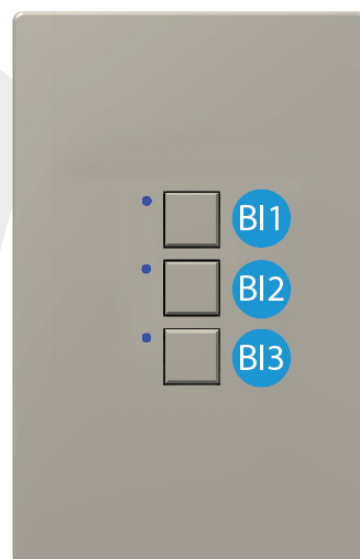
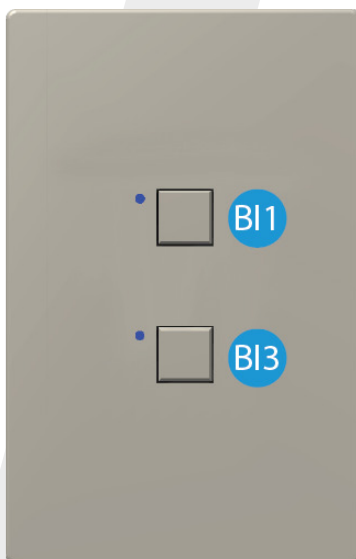
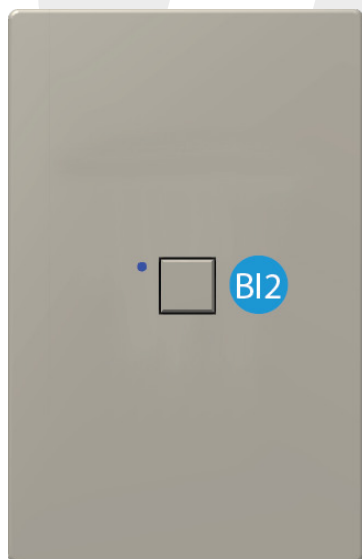
- Can be used for almost any BACnet application that requires a button for control

### Specifications

- Primary voltage is 12 - 24 VAC/VDC
- Requires Class 2 Isolated Power Supply
- Cycle or Maintain Switch Operation
- Requires Axlink 22/01PSH + 18/2C or equivalent wire
- BACnet Protocol Revision 7

## How to Order the Mystique BACnet Smart Station

Part Number	Description	Dimensions
MYSS1-0101B-XXX	Mystique Station, 1 Gang, 1 Button/1 LED, BACnet	4.880"L x 3.125"W
MYSS1-0202B-XXX	Mystique Station, 1 Gang, 2 Button/2 LED, BACnet	4.880"L x 3.125"W
MYSS1-0303B-XXX	Mystique Station, 1 Gang, 3 Button/3 LED, BACnet	4.880"L x 3.125"W
MYSS1-0404B-XXX	Mystique Station, 1 Gang, 4 Button/4 LED, BACnet	4.880"L x 3.125"W
MYSS1-0808B-XXX	Mystique Station, 1 Gang, 8 Button/8 LED, BACnet	4.880"L x 3.125"W
XXX Color Suffix	Colors Available: Light Almond (ALM), Black (BLK), Ivory (IVR), and White (WHT)	



## PIC Statement

Vendor Name: Touch-Plate<sup>®</sup> Lighting Controls  
 Product Name: Mystique BACnet Smart Control Station  
 Product Model Number: MYS-B  
 Applications Software Version: 1.6c  
 Firmware Revision: 2.49  
 BACnet Protocol Revision: 7 (135-2008)

**BACnet Standardized Device Profile (Annex L):** BACnet Application Specific Controller (B-ASC)

**BACnet Interoperability Building Blocks Supported (Annex K):**

DS-RP-B, DS-RPM-B, DS-WP-B, DS-WPM-B, DS-COV-B, DM-DDB-B, DM-DOB-B, DM-DCC-B, DM-RD-B

**Segmentation Capability:** Not supported

## Table of Objects

OBJECT EXPLANATION					
Table No.	Object	Object Type	Value	Object ID	Used For
BI1	Momentary Switch Inputs	Binary Input	0 = Off, 1 = On	BI1 - BI8	To report button presses of Control Stations
BI2	Maintain Switch Inputs	Binary Input	0 = Off, 1 = On	BI101 - BI108	To report button holds of Control Stations
BO1	LED Controls	Binary Output	0 = Off, 1 = On	BO1-BO8	Pilot Control when not in Consensio Mode
AV1	Control Station LED Modes	Analog Value	See chart in appendix for values.	AV1 -AV8	To control Control Stations flash, color, and intensity of LED lights
AV2	Device Options	Analog Value	1 = infinite COV On 0 = infinite COV Off	AV100	To resubscribe to COVs with no expiration of the subscription write a 0 value for Lifetime when subscribing
AV3	Input Change Buffer	Analog Value	1-8 and 1001-1008	AV1001	To read button presses and releases remotely
AV4	Baud Rate	Analog Value	9600, 19200, 38400, 76800	AV1002	To read or change the Baud Rate
AV5	Device Instance	Analog Value	1 to 4194303 Default: 68501-68999	AV1003	To read or change the Device ID or Device Instance
AV6	MSTP Address	Analog Value	1 to 127	AV1004	To read or change the MSTP address
DO1	Device Object	Device Object	0 to 4194303	DEV68501-DEV68999	Describing properties of the device to the BACnet network