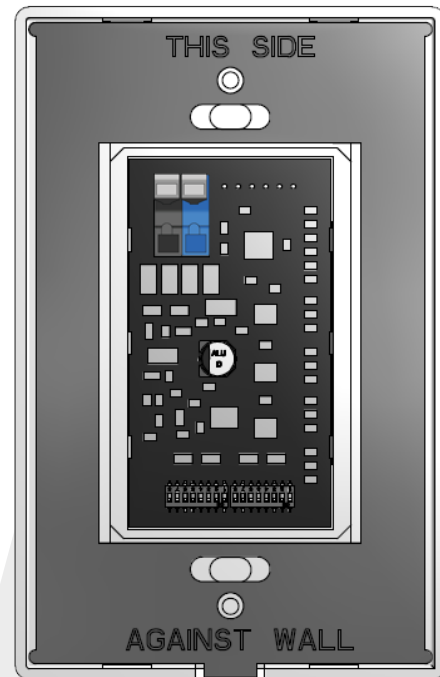


## Ultra 2-Wire Smart Station



### Product Features

- Ease of wiring, only two wires needed for installation
- Topology free
- Wire connections are not polarity sensitive
- Configurable LED intensity and color
- Multiple station colors available
- Multiple button and LED configurations
  - One, two, three, four, five, or six buttons per gang
  - One, two, three, four, five, or six LEDs per gang
- 1 and 2 Gang configurations have a screwless cover
- Engravable housing
- Comes as a complete unit, which includes the cover

### Common Applications

- Can be used for almost digital Touch-Plate application that requires a button for control.

### Specifications

- Primary voltage is 12 - 24 VAC/VDC
- Requires 16/2 twisted pair or equivalent wire
- Between 8-16 stations per 300-1000ft run; dependent on the Touch-Plate connection



## LED Model Numbers

Part Number	Description	Dimensions
ULTS1-0101T-XXX	Ultra Station, 1 Gang, 1 Button/1 LED, 2-Wire	4.880"L x 3.125"W
ULTS1-0202T-XXX	Ultra Station, 1 Gang, 2 Button/2 LED, 2-Wire	4.880"L x 3.125"W
ULTS1-0303T-XXX	Ultra Station, 1 Gang, 3 Button/3 LED, 2-Wire	4.880"L x 3.125"W
ULTS1-0404T-XXX	Ultra Station, 1 Gang, 4 Button/4 LED, 2-Wire	4.880"L x 3.125"W
ULTS1-0505T-XXX	Ultra Station, 1 Gang, 5 Button/5 LED, 2-Wire	4.880"L x 3.125"W
ULTS1-0606T-XXX	Ultra Station, 1 Gang, 6 Button/6 LED, 2-Wire	4.880"L x 3.125"W
XXX Color Suffix	Colors Available: Light Almond (ALM), Black (BLK), Ivory (IVR), and White (WHT)	

