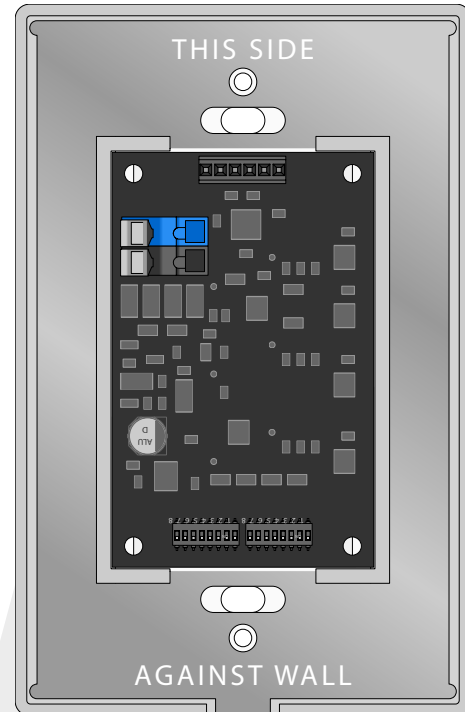
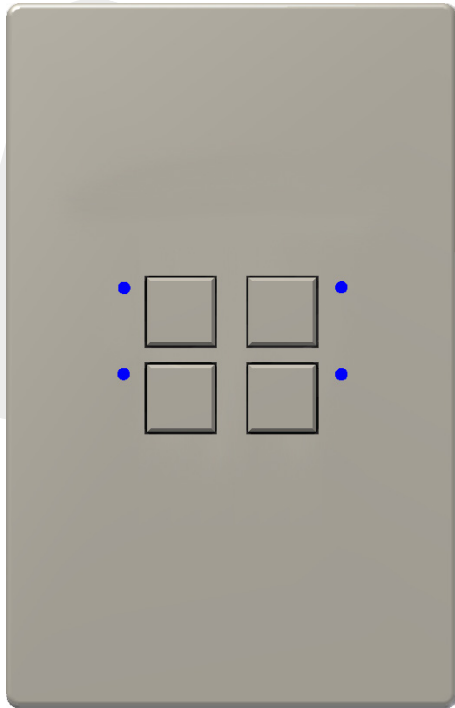


## Mystique 2-Wire Smart Station



### Benefits

- Elegant button design
- Ideal complement to any low voltage system
- Ideal for upgrades of existing low voltage systems
- Topology free

### Features

- Ease of wiring, only two wires needed for installation
- Configurable LED intensity and color
- 1 Gang configuration has a screwless cover
- Engravable button caps
- Comes as a complete unit, which includes the cover

### Common Applications

- Can be used for almost any digital Touch-Plate application that requires a button for control

### Specifications

#### Colors

- Light Almond, Black, Ivory, and White

#### Button Configuration

- 1, 2, 3, 4 & 8 Buttons in a 1-Gang wall mount

#### Run Length

- Between 8-16 stations per 300-1000ft run
- Dependent on the Touch-Plate connection

#### Contact

- Dry contact

#### Voltage Range

- 12 - 24VAC/VDC

#### Wire Type

- 16/2 twisted pair or equivalent wire

#### Environment

- 0 - 60°C (0 - 140°F) non-condensing atmosphere



## LED Model Numbers

Part Number	Description	Dimensions
MYSS1-0101T-XXX	Mystique Station, 1 Gang, 1 Button/1 LED, 2-Wire	4.880"L x 3.125"W x .694"D
MYSS1-0202T-XXX	Mystique Station, 1 Gang, 2 Button/2 LED, 2-Wire	4.880"L x 3.125"W x .694"D
MYSS1-0303T-XXX	Mystique Station, 1 Gang, 3 Button/3 LED, 2-Wire	4.880"L x 3.125"W x .694"D
MYSS1-0404T-XXX	Mystique Station, 1 Gang, 4 Button/4 LED, 2-Wire	4.880"L x 3.125"W x .694"D
MYSS1-0808T-XXX	Mystique Station, 1 Gang, 8 Button/8 LED, 2-Wire	4.880"L x 3.125"W x .400"D
XXX Color Suffix	Colors Available: Light Almond (ALM), Black (BLK), Ivory (IVR), and White (WHT)	

## Wiring Diagram

This wiring diagram does not show all the connections. Please see the Mystique Series Wiring Diagram for further wiring instructions.

